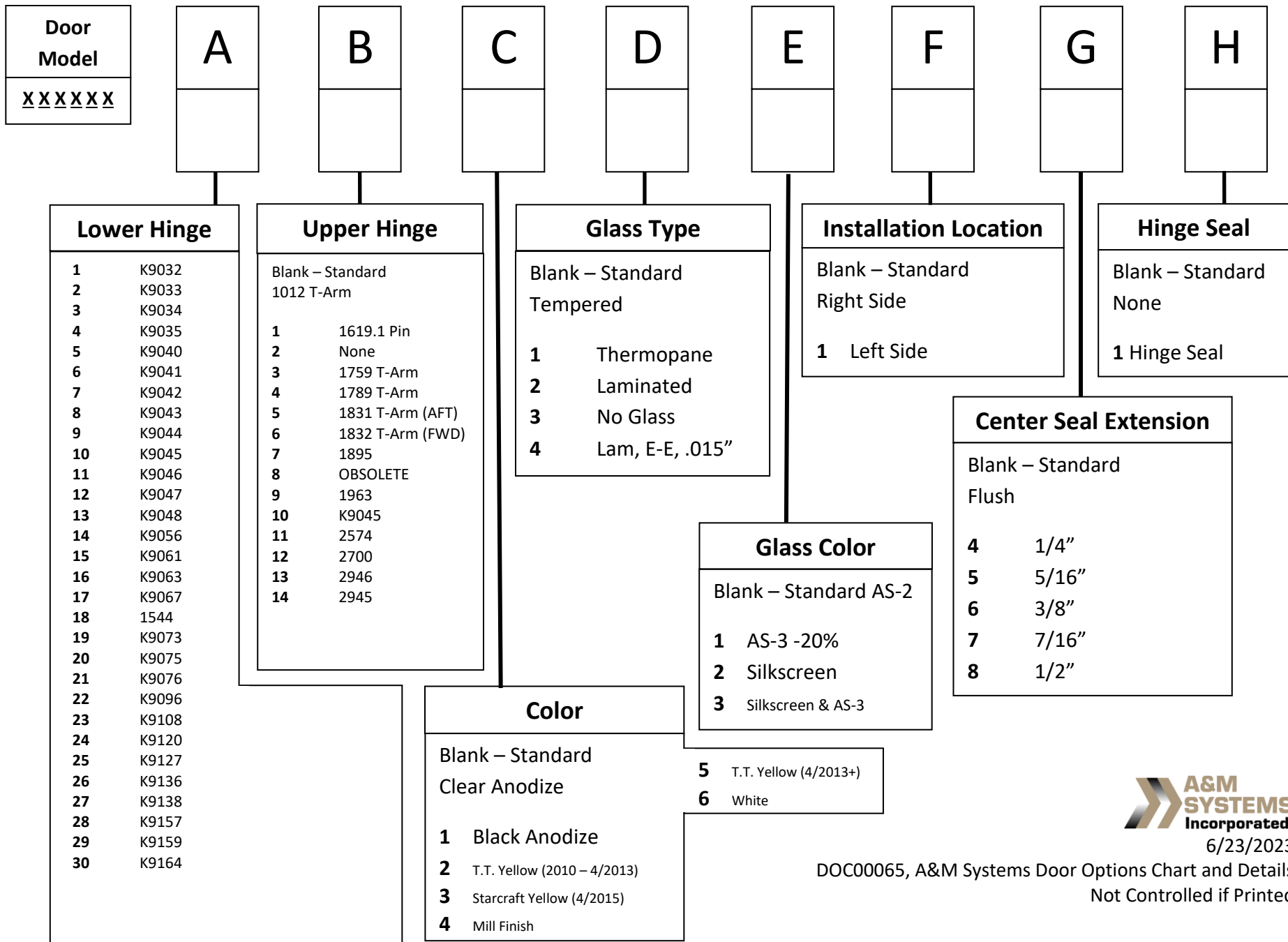


A&M Systems Door Options Chart



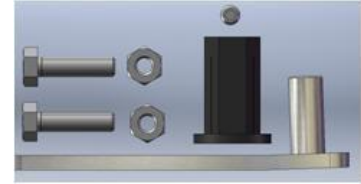
6/23/2023

DOC00065, A&M Systems Door Options Chart and Details
 Not Controlled if Printed

A&M Systems Door A Option Detail

K9032 (A1)

Qty	U/M	Part No	Description	Notes
1	ea	P100062	Set Screw, 1/4-20 x 3/16"	
2	ea	P100408	Nylock Nut, 1/4-20	
2	ea	P100003	Bolt, 1/4-20 x 1"	
1	ea	1541.1	Lower Pivot, 2° SS	
1	ea	1544	Hex Bushing	



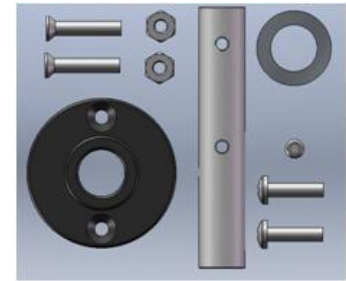
K9033 (A2)

Qty	U/M	Part No	Description	Notes
1	ea	P100062	Set Screw, 1/4-20 x 3/16"	
1	ea	1547	Pin, 7/16" x 1-3/4" SS	
1	ea	1544	Hex Bushing	



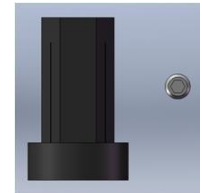
K9034 (A3)

Qty	U/M	Part No	Description	Notes
1	ea	P100062	Set Screw, 1/4-20 x 3/16"	
2	ea	P100029	Nylock Nut, 10-32	
2	ea	P100533	Screw, 10-32 x 1"	
1	ea	P100034	Washer, 1" x 5/8"	
1	ea	1536	Lower Pin	
2	ea	P100562	Screw, 10-32 x 1/2"	
1	ea	2146	Lower Pivot	



K9035 (A4)

Qty	U/M	Part No	Description	Notes
1	ea	P100062	Set Screw, 1/4-20 x 3/16"	
1	ea	1561	Hex Bushing, 3/8" shoulder	



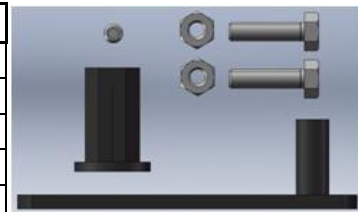
K9040 (A5)

Qty	U/M	Part No	Description	Notes
1	ea	P100062	Set Screw, 1/4-20 x 3/16"	
1	ea	1701, Rev. B	Lower Pivot, 8.5°, SS	
6	ea	1863	1 x 7/16 x 1/8 ABS Washer	
1	ea	1544	Hex Bushing	



K9041 (A6)

Qty	U/M	Part No	Description	Notes
1	ea	P100062	Set Screw, 1/4-20 x 3/16"	
2	ea	P100408	Nylock Nut, 1/4-20	
2	ea	P100003	Bolt, 1/4-20 x 1"	
1	ea	1707	Lower Pivot	
1	ea	1544	Hex Bushing	



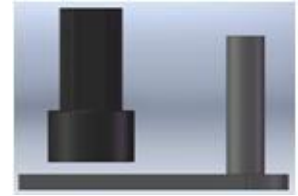
K9042 (A7)

Qty	U/M	Part No	Description	Notes
1	ea	P100062	Set Screw, 1/4-20 x 3/16"	
1	ea	1707	Lower Pivot	
1	ea	1544	Hex Bushing	



K9043 (A8)

Qty	U/M	Part No	Description	Notes
1	ea	1745	Lower Pivot	
1	ea	1754	Hex Bushing, 5/8" shoulder	



K9044 (A9)

Qty	U/M	Part No	Description	Notes
1	ea	P100062	Set Screw, 1/4-20 x 3/16"	Same as K9032 only lower pivot is E-coated Carbon Steel
2	ea	P100408	Nylock Nut, 1/4-20	
2	ea	P100003	Bolt, 1/4-20 x 1"	
1	ea	1764	Lower Pivot, 2°	
1	ea	1544	Hex Bushing	



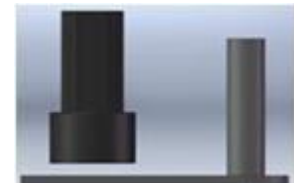
K9045 (A10)

Qty	U/M	Part No	Description	Notes
1	ea	P100062	Set Screw, 1/4-20 x 3/16"	Same as A12
1	ea	1745	Lower Pivot	
1	ea	1544	Hex Bushing, through hole	



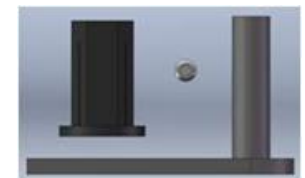
K9046 (A11)

Qty	U/M	Part No	Description	Notes
1	ea	1745	Lower Pivot	
1	ea	1786	Hex Bushing, 9/16" shoulder	



K9047 (A12)

Qty	U/M	Part No	Description	Notes
1	ea	P100062	Set Screw, 1/4-20 x 3/16"	
1	ea	1745	Lower Pivot	
1	ea	1544	Hex Bushing	



K9048 (A13)

Qty	U/M	Part No	Description	Notes
1	ea	P100062	Set Screw, 1/4-20 x 3/16"	
1	ea	1795	Lower Pivot, 6° bend	
1	ea	1544	Hex Bushing	
2	ea	P100408	Nylock Nut, 1/4-20	
2	ea	P100003	Bolt, 1/4-20 x 1"	



K9056 (A14)

Qty	U/M	Part No	Description	Notes
1	ea	P100062	Set Screw, 1/4-20 x 3/16"	
1	ea	1701, Rev. C	Lower Pivot, 8.5°	
1	ea	1786	Hex Bushing, 9/16" Shoulder	
2	ea	1863	1 x 7/16 x 1/8 ABS Washer	



9061 (A15)

Qty	U/M	Part No	Description	
1	ea	1707	Lower Pivot	
1	ea	1544	Hex Bushing	
2	ea	1863	1 x 7/16 x 1/8 ABS Washer	

K9063 (A16)

Qty	U/M	Part No	Description	Notes
1	ea	1880	Lower Pivot	
1	ea	1544	Hex Bushing	
1	ea	P100062	Set Screw, 1/4-20 x 3/16"	

K9067 (A17)

Qty	U/M	Part No	Description	Notes
1	ea	1895	.625" Hex to .5" Threaded Rod, 4" OAL	
2	ea	P100533	Screw, 10-32 x .50"	

A18

Qty	U/M	Part No	Description	Notes
1	ea	1544	Hex Bushing	

K9073 (A19)

Qty	U/M	Part No	Description	Notes
1	ea	1544	Hex Bushing	
1	ea	1946	Lower Pivot, Double Bend	
1	ea	P100062	Set Screw, 1/4-20 x 3/16"	

K9075 (A20)

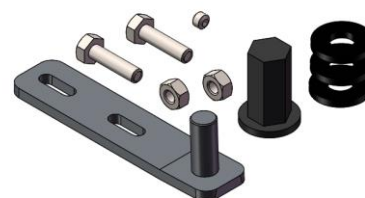
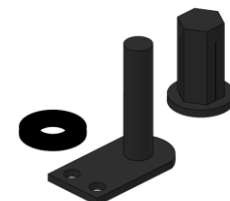
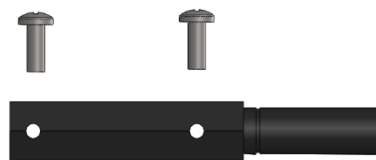
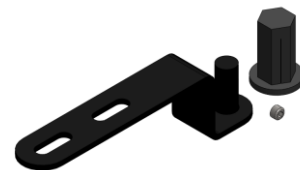
Qty	U/M	Part No	Description	Notes
1	ea	P100062	Set Screw, 1/4-20 x 3/16"	
1	ea	1780	Hex Bushing, through hole	
1	ea	1701, Rev. C	Lower Pivot, 8.5°	
2	ea	1863	1 x 7/16 x 1/8 ABS Washer	

K9076 (A21)

Qty	U/M	Part No	Description	Notes
1	ea	1863	1 x 7/16 x 1/8 ABS Washer	
1	ea	1544	Hex bushing	
1	ea	1951	Lower Pivot	

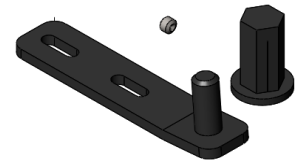
K9096 (A22)

Qty	U/M	Part No	Description	Notes
1	ea	P100062	Set Screw, 1/4-20 x 3/16"	
2	ea	P100408	Nylock Nut, 1/4-20	
2	ea	P100003	Bolt, 1/4-20 x 1"	
1	ea	1541.1	Lower Pivot, 2° SS	
1	ea	1544	Hex Bushing	
3	ea	1863	1 x 7/16 x 1/8 ABS Washer	



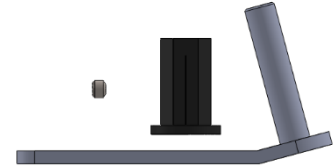
K9108 (A23)

Qty	U/M	Part No	Description	Notes
1	ea	P100062	Set Screw, 1/4-20 x 3/16"	
1	ea	1544	Hex bushing	
1	ea	2182	Lower Pivot, 4.5 deg bend	



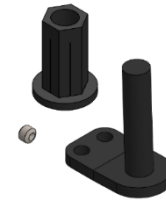
K9120 (A24)

Qty	U/M	Part No	Description	Notes
1	ea	P100062	Set Screw, 1/4-20 x 3/16"	
1	ea	1544	Hex bushing	
1	ea	2379	Lower Pivot, 15 deg bend	



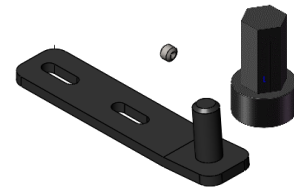
K9127 (A25)

Qty	U/M	Part No	Description	Notes
1	ea	P100062	Set Screw, 1/4-20 x 3/16"	
1	ea	1544	Hex bushing	
1	ea	1951	Lower Pivot, 2 deg bend	



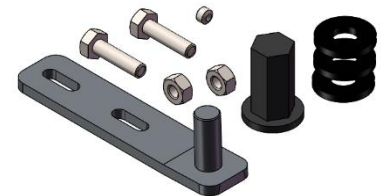
K9136 (A26)

Qty	U/M	Part No	Description	Notes
1	ea	P100062	Set Screw, 1/4-20 x 3/16"	
1	ea	1786	Hex bushing, 9/16" shoulder	
1	ea	2182	Lower Pivot, 4.5 deg bend	



K9139 (A27)

Qty	U/M	Part No	Description	Notes
1	ea	P100062	Set Screw, 1/4-20 x 3/16"	Same as K9096 but with e-coated carbon steel
2	ea	P100408	Nylock Nut, 1/4-20	
2	ea	P100003	Bolt, 1/4-20 x 1"	
1	ea	1764	Lower Pivot, 2°	
1	ea	1544	Hex Bushing	
3	ea	1863	1 x 7/16 x 1/8 ABS Washer	



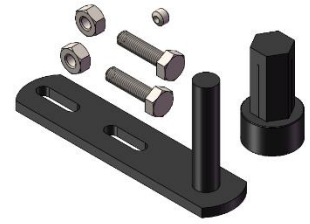
K9157 (A28)

Qty	U/M	Part No	Description	Notes
1	ea	P100062	Set Screw, 1/4-20 x 3/16"	
1	ea	1544	Hex bushing	
1	ea	2881	Spacer, .438" ID x .875" tall x 1" OD, GF nylon, Black	
1	ea	2882	Pivot, Lower, 12 deg bend, mild steel black e-coat	



K9159 (A29)

Qty	U/M	Part No	Description	Notes
1	ea	P100062	Set Screw, 1/4-20 x 3/16"	
2	ea	P100408	Nylock Nut, 1/4-20	
2	ea	P100003	Bolt, 1/4-20 x 1"	
1	ea	1707	Lower Pivot	
1	ea	1786	Hex Bushing	



K9164 (A30)

Qty	U/M	Part No	Description	Notes
1	ea	P100062	Set Screw, 1/4-20 x 3/16"	
1	ea	1795	Lower Pivot, 6° bend	
1	ea	1544	Hex Bushing	



A&M Systems Doors B Option Detail

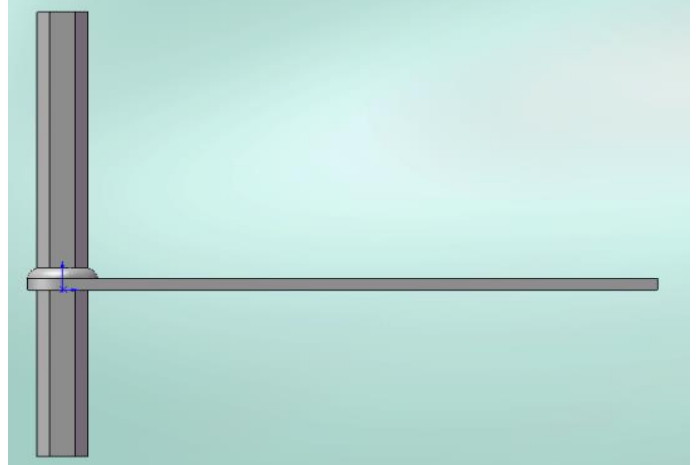
Standard

Qty	U/M	Part No	Description
1	ea	1012	9" Torque Arm, 5" Hex



1759 Torque Arm (B3)

Qty	U/M	Part No	Description
1	ea	1759	9" Torque Arm, 7.5" Hex



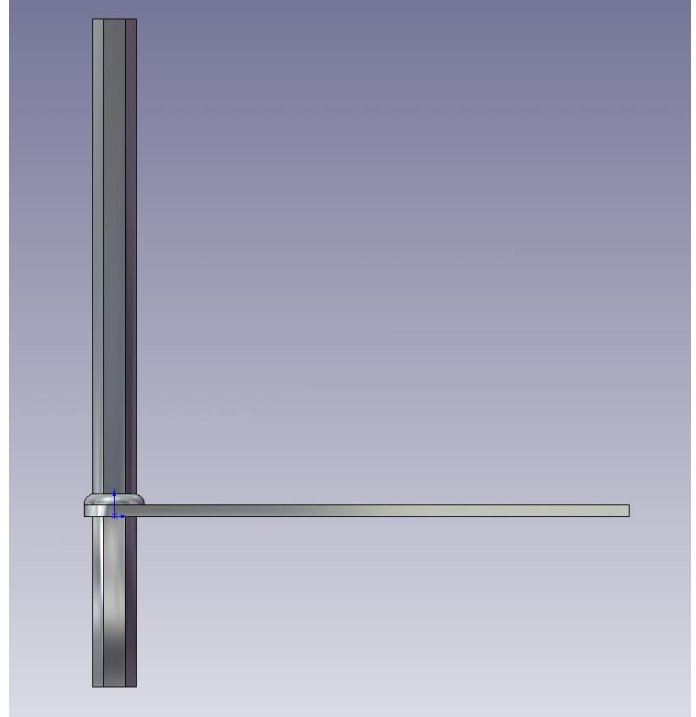
1619.1 Pin (B1)

Qty	U/M	Part No	Description
1	ea	1619.1	5/8" round to 9/16" round, 10-32 hole



1789 Torque Arm (B4)

Qty	U/M	Part No	Description
1	ea	1789	9" Torque Arm 11" Hex



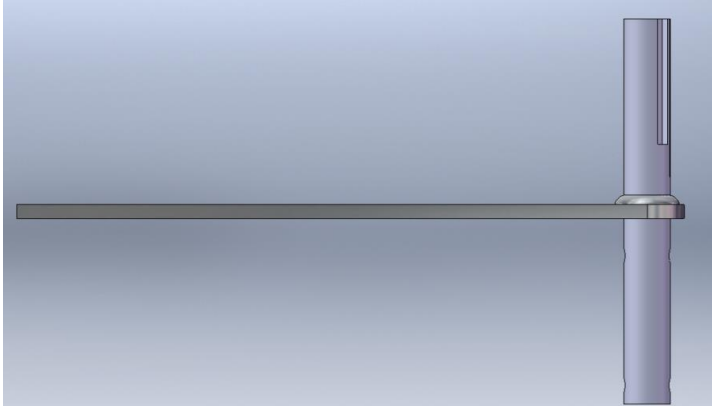
Nothing (B2)

Qty	U/M	Part No	Description
-	-	-	-

A&M Systems Doors B Option Detail

1831 Torque Arm AFT (B5) (OBSOLETE)

Qty	U/M	Part No	Description
1	ea	1831	5/8" dia shaft with 45° offset 3/16"key



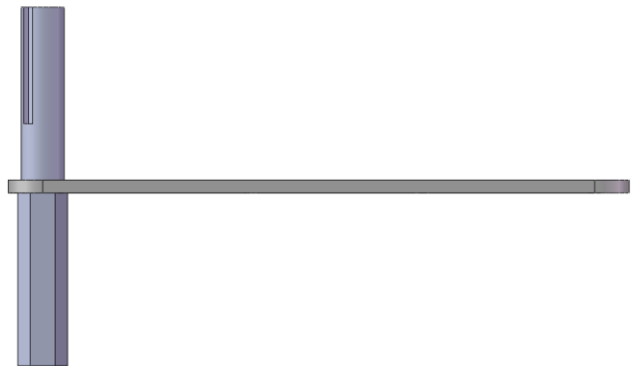
1895 (B8) (OBSOLETE, NOW B7)

Qty	U/M	Part No	Description
1	ea	1895	.625" Hex to .5" Thread, 4.00" OAL



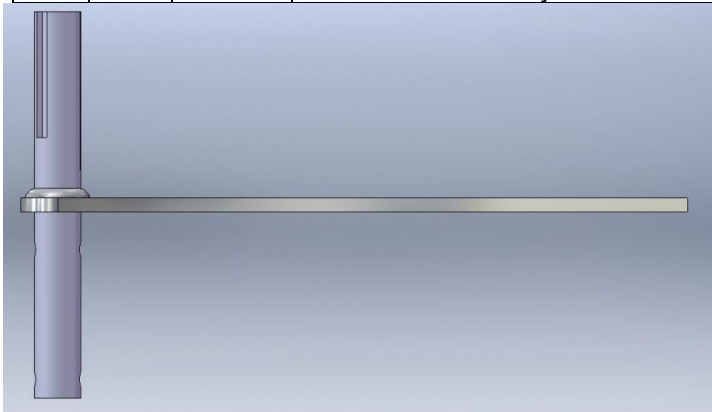
1963 Torque Arm, Uni Robbins (B9) (OBSOLETE)

Qty	U/M	Part No	Description
1	ea	1963	5/8" dia shaft, (45° offset 3/16"key x2), 5/8" hex bottom shaft



1832 Torque Arm FWD (B6) (OBSOLETE)

Qty	U/M	Part No	Description
1	ea	1832	5/8" dia shaft with 45° offset 3/16"key



1895 (B7) Updated 7/11/12

Qty	U/M	Part No	Description
1	ea	1895	.625" Hex to .5" Thread, 4.00" OAL



K9045 (B10)

Qty	U/M	Part No	Description
1	ea	1745	Lower Pivot
1	ea	1544	Hex Bushing, through hole



A&M Systems Doors B Option Detail

2574 Torque Arm (B11) (OBSOLETE)

Qty	U/M	Part No	Description
1	ea	2574	9" Torque Arm 14" Hex

2700 Torque Arm (B12)

Qty	U/M	Part No	Description
1	ea	2700	Torque Arm Assembly, Square

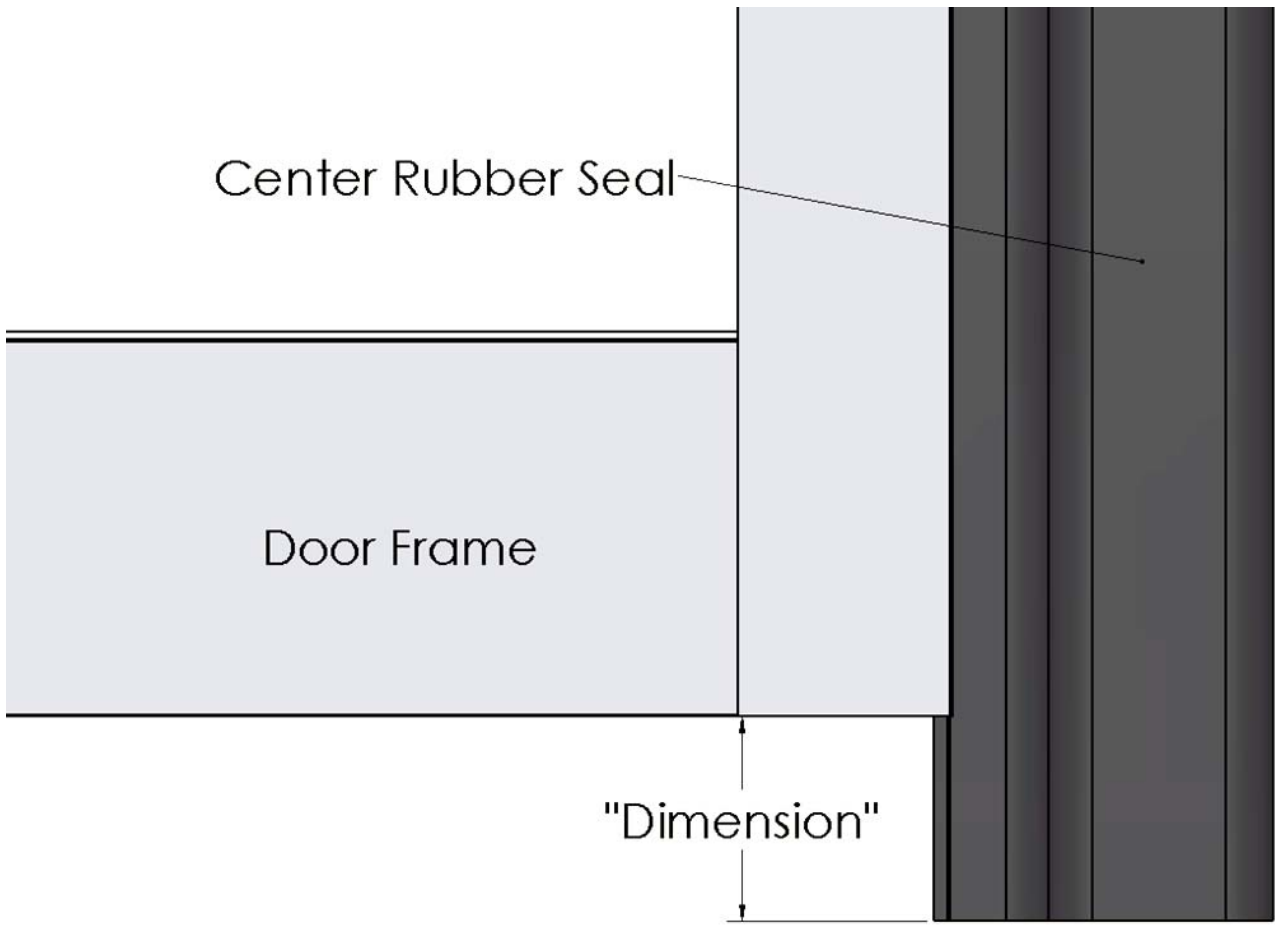
2946 Torque Arm (B13)

Qty	U/M	Part No	Description
1	ea	2946	9" Torque Arm 15.625" Hex

2945 Torque Arm (B14)

Qty	U/M	Part No	Description
1	ea	2945	9" Torque Arm 7.625" Hex

A&M Systems Door G Option Detail



"G" Option Code*	Dimension
G4	1/4"
G5	5/16"
G6	3/8"
G7	7/16"
G8	1/2"

*All G-codes are in 1/16". For example G5 is 5/16", G20 is 20/16" or 1-1/4", G24 is 24/16" or 1-1/2". Not all available G-codes are listed.

